

Prudent Minerals Executes Option to Acquire the ABE Gold Project in Colombia

Vancouver B.C., August 10, 2022 – PRUDENT MINERALS CORP. (“Prudent” or the “Company”) (CSE: PRUD) is pleased to report it has entered into an interim agreement to acquire 100% of the shares of Berlin Precious Metals Corp. (“Berlin”) has the exclusive right to earn 100% of the ABE Gold Project (“ABE”), located 70-km south of the city of Medellín, Colombia, which consists of five concession applications covering 4,512ha, and a 110ha mining concession that’s covers the Purimac gold mine (together, the “Berlin Properties” - refer to Transaction section).

ABE Gold is located in NW Colombia where a number of under-explored and well-endowed mineral districts host a multitude of world class gold deposits including La Colosa (+ 28 Moz), Marmato (+17 Moz), Buritica (+11 Moz) and the Segovia district (+3 Moz) (refer to Figure 1). Gold mineralization at ABE is hosted in quartz veins in an orogenic/mesothermal setting, analogous to the past producing Berlin Gold Deposit (413,000 oz from 1936 to 1946 - see references section). The Berlin Gold Deposit is located 150 km to the north of ABE in an identical geological setting. *Prudent cautions investors the presence of significant gold mineralization on each of the above referenced deposits is not necessarily indicative of similar mineralization on the Berlin Properties and the foregoing are provided for context only.*

ABE covers the long active Purimac mine, dating back to the colonial period. The quartz vein-hosted mineralization is located along a 30m wide structural corridor that has been traced for over 2-km and mined underground over 17 levels and 2-km along strike; mineralization remains open in all directions. The mined mineralized shoots averaged a grade of 26g/t ton, with highlight muck grab samples of 96g/t Au. *Grab samples are not necessary representative of mineralization.*

Exploration by Berlin over the last 20 months includes: mapping at the Purimac mine, LIDAR over 20-km², and geochemistry over 119ha within the ABE mining concession identifying gold targets in parallel and sub-parallel geologic structures and 17 historical gold mines. Highlight gold values of 3.4g/t in surface soil samples and 6.61 g/t in accessible historical mines have been recorded. Additionally, ground magnetics were completed over 137ha. Further, 27-line-km of IP surveying at 100m and 200m line spacing is nearing completion.

“Prudent believes ABE has the large-scale potential, and initial modern exploration only commenced in late 2020,” commented Prudent President, Brett Matich.

“Prudent plans to complete modelling and field work for drill delineation and permitting,” he concluded.



Figure 1. ABE Gold Project location

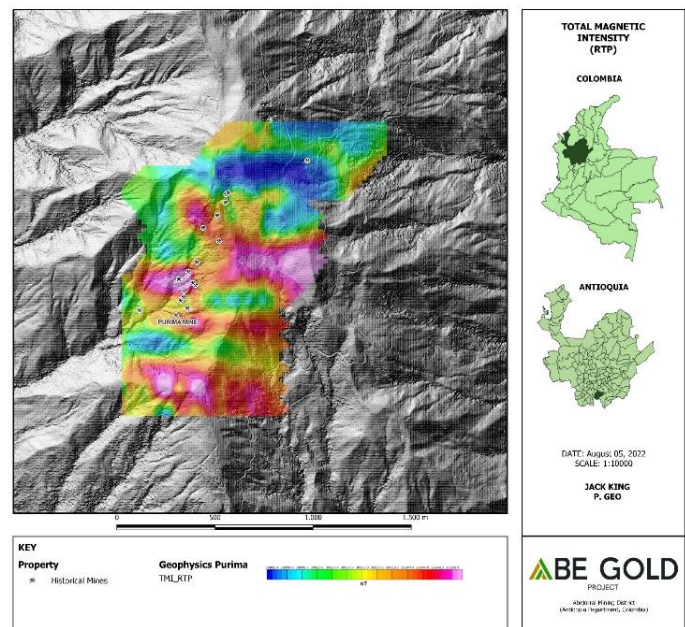


Figure 2. ABE Gold area, ground magnetics

First modern exploration activities commenced in November 2020:

Mapping of the +1500m of working in the Purimac mine is well in progress. The main level has 700m of advances in multiple veins. Shafts and stopes account for another 800m of workings. These workings connect to even older historical mine workings dating back to the year 1751. The Purimac mine contains four shoots of mineralization. Three Shoots have been intensely mined above the main level and are virgin below the main level. The newly discovered Shoot 4 is open above, below, and to the north of the currently advancing drift.

Mapping of historical mines indicates an association with an intense multi-directional quartz vein systems within the Purimac Shear Zone ("PSZ"). The vein mineralization is associated with schists and intrusive rocks that comprise the footwall and hanging wall units.



Figure 3. Typical mine-rock. Coarse gold from panning



Figure 4. Typical vein width averages 2m

A LIDAR survey (Light Detection and Ranging with 12cm topography accuracy) covering 20-km square was carried out in late 2021 along the strike of the PSZ. Using LIDAR, structural geologic mapping was made from interpretations along with detailed structural mapping of underground exposures. LIDAR is also used for geologic logistics and will be used for drill planning.

A Laser 3D model of the Purimac Mine was completed in early 2022, as a laser mapping activity of the active underground Purimac workings. At the time of the laser mine mapping, there were three known shoots of mineralization with stopes and shafts in multiple veins. The result from the 3D mine model gave the geologic model the plunge and dip of the Shoots, therefore the geologic team is able to project the vein system to depth and strike length, thus creating drill targets. Shoot 4 in the Purimac Mine was undiscovered at the time of laser mapping. Additional shoots are expected to be regularly spaced along the strike of the PSZ.

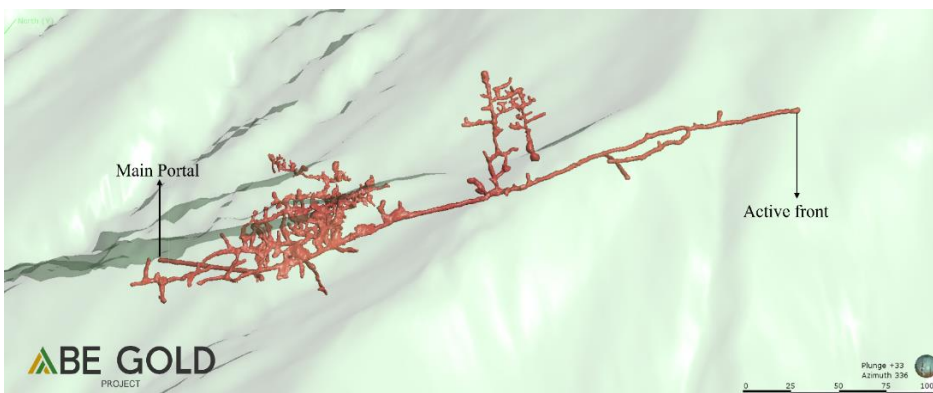


Figure 5. Long Section of the Purimac mine

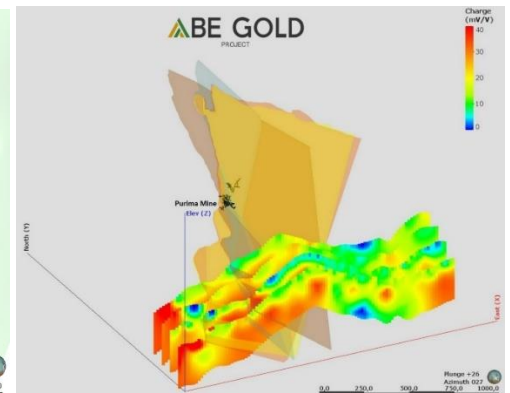
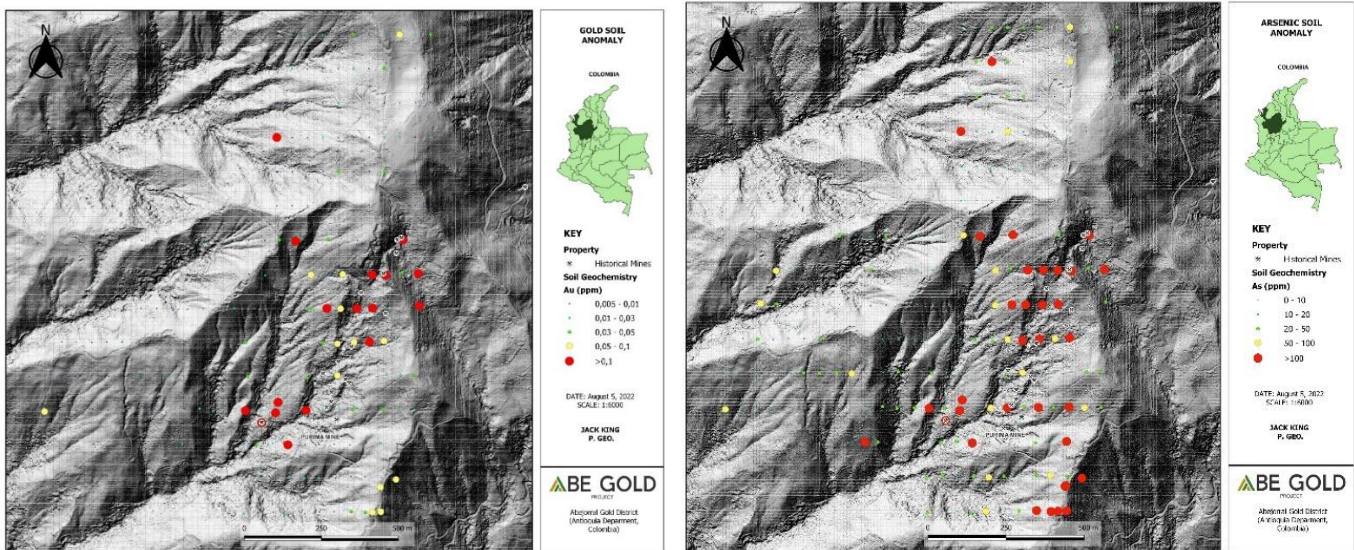


Figure 6. Geologic model with IP geophysics

The Purimac mine has at least 1500m of accessible workings. The mine includes three extensively mined high grade mineralized shoots which are open to depth, and one newly discovered Shoot 4 open 250m above, and open to depth, and to the north. The mine is currently testing the north principal front at 400m inside the mountain.

Soil Geochemistry covering 119ha was completed over the Purimac Mineralized Shear Zone with highly positive results for gold. The soil geochemistry combined with other associated elements, indicate that there are multiple parallel gold mineralized structures to the east and west of the known Purimac Mineralized Shear Zone (refer to Figure 2).



A Ground Magnetic Survey covering 137ha was done in 2022 and indicates a strong correlation between gold mineralization and magnetic highs. The historical mines and Purimac mine, all correlate to the magnetic highs. The Magnetic Survey also indicates more potential area to the south along the projected strike length of the Purimac Mineralized Shear Zone.

A Ground Induced Polarisation (“IP”) Geophysics Survey is in progress and has been showing a southern strike length extension of the known Purimac Mineralized Shear Zone. The survey consists of 27-line-km with lines spaced 100m and 200m apart. The projection of the multiple veins set hosted in the Purimac Mineralized Shear Zone correlated with the chargeable IP geophysics. The current IP survey will cover the historical mines and Purimac mine hosted in the Purimac Mineralized Shear Zone. IP geophysics will be combined with magnetic geophysics, soil geochemistry, and mine mapping to create high potential drill targets.

A Long Section of the Purimac Mineralized Shear Zone mine workings was undertaken to show how historical mining has only scratched the surface of the mountain. The long section clearly shows that gold mineralization is open below, above, and to the north within the mountain.

Geologic model is always ongoing and becoming more detailed as exploration work gives the geologic team more information. The geologic model indicated that the Purimac Mineralized Shear Zone contains multiple veins. The veins contain high grade mineralized shoots. The geologic model will be used to pick high potential drill targets.

The ABE Gold Project has established good social relationships with local landowners and the community. The project area is accessible by public roads. The project area also is a very safe area to explore and contains excellent infrastructure such as high voltage electricity, hydroelectric stations, good communication, and water. The local mayor and community leaders support our efforts of exploration.

References

- La Colosa (+ 28Moz) <https://www.aga-reports.com/21/wp-content/uploads/2022/04/AGA-RR21.pdf>
- Marmato (+17 Moz) www.arisgold.com
- Buritica (+11 Moz) <https://www.continentalgold.com/continental-gold-announces-an-updated-mineral-resource-estimate-for-the-buritica-project-colombia-2/>
- Segovia district (+3 Moz) www.gcm-mining.com
- Berlin gold deposit (historical 413,000oz 1936-46) <https://www.continentalgold.com/projects/berlin/>

Transaction

Subject to the negotiation and execution of a definitive option agreement, Prudent shall have the exclusive right to acquire 100% of the issued shares of Berlin a Canadian corporation in exchange for issuing 8,000,000 common shares (escrowed for 2-years) and 8,000,000 common share purchase warrants with an exercise price of \$0.50 per share exercisable for a period of 5 years. Berlin has the exclusive rights to five wholly owned concession applications covering approximately 4,512ha

adjacent/nearby the Purimac gold mine and exclusive rights to earn 100% of the Purimac gold mine concession covering 110ha for payments of US\$75,000 on receiving drilling permit to earn 10%; and US\$125,000 on first anniversary to earn additional 10%; and US\$300,000 on second anniversary to earn additional 10%; and US\$1,400,000 on third anniversary to earn additional 70% for a total of 100%.

Following the first anniversary payments referred to above, Berlin has a one-time right to pay US\$1,400,000 for the then outstanding interest of 80% for total of 100% interest. Vendors will hold an underlying 2% NSR over the ABE Gold project.

Qualified Person

The Company's disclosure of a technical or scientific nature in this news release was reviewed and approved by Tim Henneberry, P Geo (British Columbia), who serves as a qualified person under the definition of National Instrument 43:101.

About Prudent Minerals Corp.

Prudent Minerals Corp. is a Canadian publicly listed company conducting exploration on its SAT Property in British Columbia, Canada. On April 18, 2022, Prudent commenced trading on the Canadian Securities Exchange (CSE: PRUD) as a national resource company engaged in primarily acquisition, exploration and, if warranted, development of mineral properties.

For more information visit: <https://www.prudentminerals.com/>

For additional information contact:

E. info@prudentminerals.com

P. (+1) 604 365 1522

The Canadian Securities Exchange has not reviewed or approved the content of this news release and accepts no responsibility for the adequacy or accuracy of this release

Except for statements of historic fact, this news release contains certain "forward-looking information" within the meaning of applicable securities law. Forward-looking information is frequently characterized by words such as "plan", "expect", "project", "intend", "believe", "anticipate", "estimate" and other similar words, or statements that certain events or conditions "may" or "will" occur. Forward-looking statements are based on the opinions and estimates at the date the statements are made and are subject to a variety of risks and uncertainties and other factors that could cause actual events or results to differ materially from those anticipated in the forward-looking statements including, but not limited to delays or uncertainties with regulatory approvals, including that of the Canadian Securities Exchange. There are uncertainties inherent in forward-looking information, including factors beyond the Company's control. There are no assurances that the commercialization plans for Prudent Minerals Corp. described in this news release will come into effect on the terms or time frame described herein. The Company undertakes no obligation to update forward-looking information if circumstances or management's estimates or opinions should change except as required by law. The reader is cautioned not to place undue reliance on forward-looking statements. Additional information identifying risks and uncertainties that could affect financial results is contained in the Company's filings with Canadian securities regulators, which filings are available at www.sedar.com